

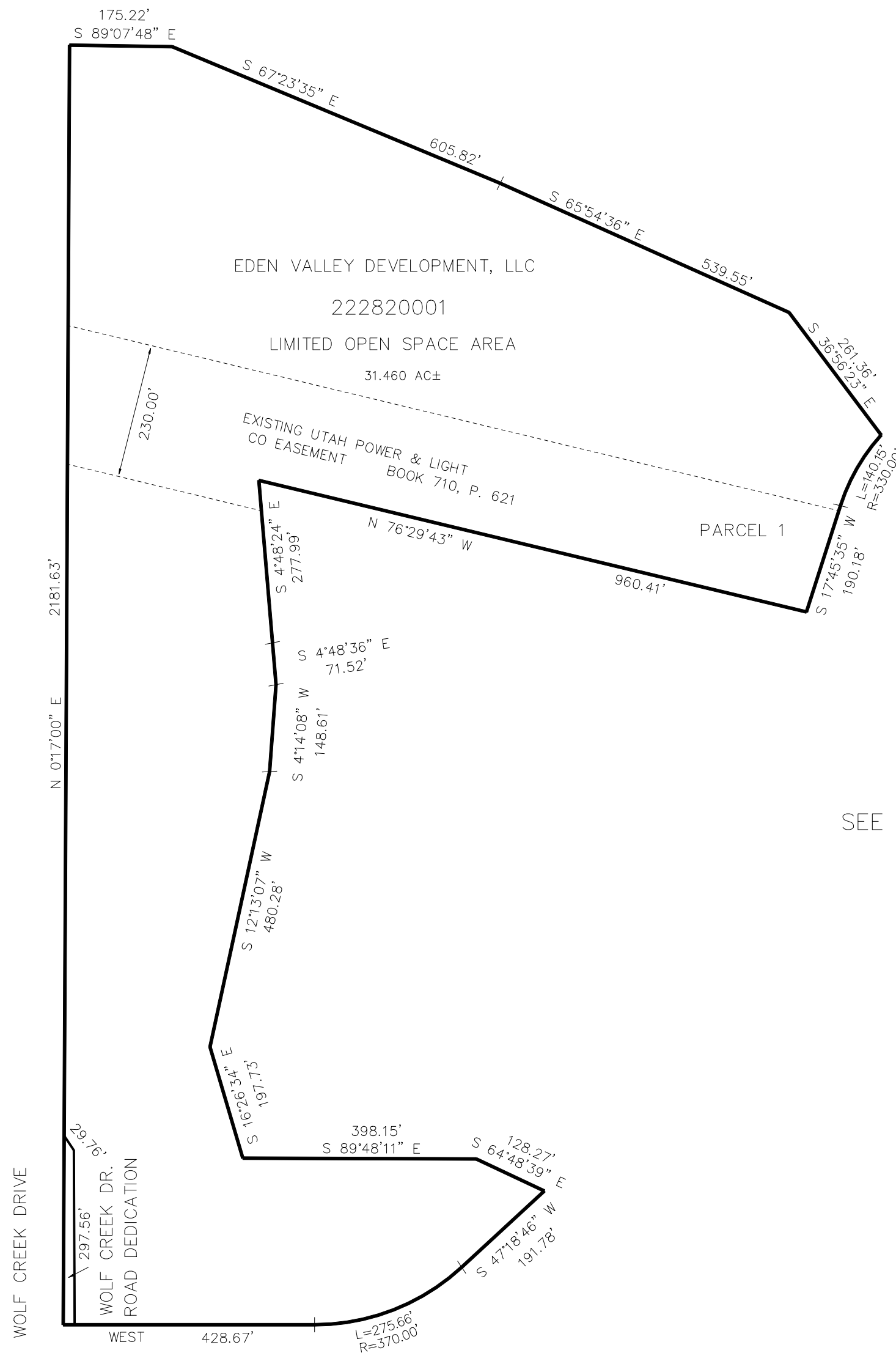
PART OF THE NE 1/4, OF SECTION 27, T.7N., R.1E., S.L.B. & M.
GOLF COURSE AREA PARCEL 1

TAXING UNIT: 203

IN WEBER COUNTY
SCALE 1" = 200'

SEE PAGE 22

SEE PAGE 22



FOR COMPLETE ENG DATA SEE ORIGINAL DEDICATION PLAT IN BOOK 68, PAGE 20 & 21 OF RECORDS.